

# Stained Glass of St Senan's Catholic Church, Toler Street, Kilrush, County Clare.

**1** *St Edmund, King and Martyr and St Stephen*, (1925-26) by Harry Clarke (1889-1931) of Joshua Clarke & Sons. Ordered by the Very Rev. Dean McInerney P.P., V.G. on 12th December 1925 at a cost of £154 for the pair. Installed 25 September 1925.



Figure 1 (L-R): St Edmund and St Stephen

Inscription: In memory of Edmund and Stephen Clancy R.I.P.  
Donor: Mrs Michael Clancy of Burton Street, Kilrush. Dedicated to Edmund Clancy (1814-1874) and Stephen Clancy (-1923)

St Edmund the martyr (855-869) was a king of East Anglia.  
St Stephen was the first Christian martyr and was stoned to death. His feast day is 26 December.

**2** *Crucifixion*, (1932) By artists at Harry Clarke Studios. Harry Clarke died on 6 January 1931 aged 42 years.

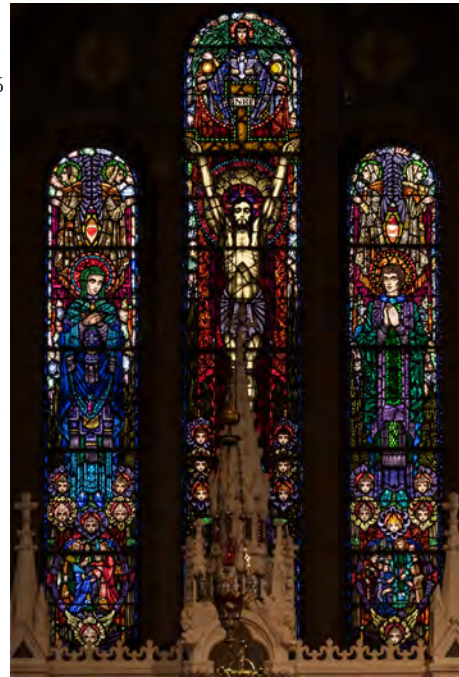


Figure 2: Crucifixion (1932)

This window was ordered by V Rev Canon Hogan (1866-1937) PP, Kilrush on 30 April 1932 costing £300. Erected on 14 October 1932. Fr Hogan was Parish Priest of Kilrush from 1931 to 1937.

The crucified figure of Christ is based on a black & white photo of Harry Clarke which he arranged to have taken c.1919.

From left to right: the Blessed Virgin Mary, Christ, Mary Magdalene (hidden) and John the Evangelist.

Inscription: Erected by the people of Kilrush. In memory of Very Rev Dean McInerney PPVG 1932.

**3** *St. John the Baptist and St Jane Frances de Chantal*, (1923-24) by Harry Clarke (1889-1931) of Joshua Clarke & Sons.



Figure 3 (L-R): St John the Baptist and St Jane Frances de Chantal

These were the first Harry Clarke windows ordered for Kilrush. They were ordered by the Very Rev. Dean McInerney P.P., V.G. on 25 May 1923 at a cost of £154 for the pair. Erected on 9 December 1924 together with *St Brigid* window.

Left: *John the Baptist*, his feast day is 24 June.  
Right: *Jane Frances de Chantal* (1572-1641) was left a widow with six children at the age of 29. She founded sixty four convents of the Visitation nuns in her lifetime.

Inscription: In loving memory of Dr John Counihan who died February 22nd 1922 R.I.P. Dedicated by the Counihan family to Dr John Counihan (1846-1922) and his wife Jane Borough (1860-1913).

**4** *St Philomena* (1937) by William E. (Bill) Earley (1872-1956) of Earley Studios, Dublin. This stained glass window is over the gallery in north transept.



Figure 4: St Philomena

St. Philomena (291-304) was a Greek princess who became a virgin martyr and died at 13-years-old. Patron of infants, babies, and youth. Feast day: August 11. The anchor, arrow and palm are symbols of her martyrdom. Her remains were discovered in May 1802 at the Catacombs of Priscilla on the Via Salaria Nova with three tiles reading "Peace be to you, Philomena."

Inscription: St Philomena pray for us.

**5 & 6** *St Senan and St Timothy* (circa 1869) by Prof Frederick Settle Barff (1823-1866).



Figures 5&6 (L-R): St Senan and St Timothy

Fr Timothy Kelly (1799-1868) was Parish Priest of Kilrush from 1848 to 1869. He installed a three light *Crucifixion* window by F.S. Barff in the 1850s. This original window was replaced by the new *Crucifixion* (1932) window from Harry Clarke Studios.

The two windows are dedicated to the memory of Fr Timothy Kelly (1799-1868). The *St Senan* window was donated by his brother Mathew Kelly and his sister Mrs O'Gorman donated the *St Timothy* window.  
Inscription: St Senan and St Timothy.

St Senan (c. 488-544) has his feast day on 8 March. The feast day for St Timothy (17-97) is 26 January.

**7** *Rose Window of the Joyful Mysteries*, (1994-1996), by Willie Earley (1930-2019).

Featuring *The Annunciation, The Visitation, The Birth of Our Lord, The Presentation in the Temple, The Finding of Jesus in the Temple*.

The Rose window is over the main entrance to the church in the choir balcony.

Donated by Noel Keating (1941-1993) in memory of his parents Sonny and Mary Keating.

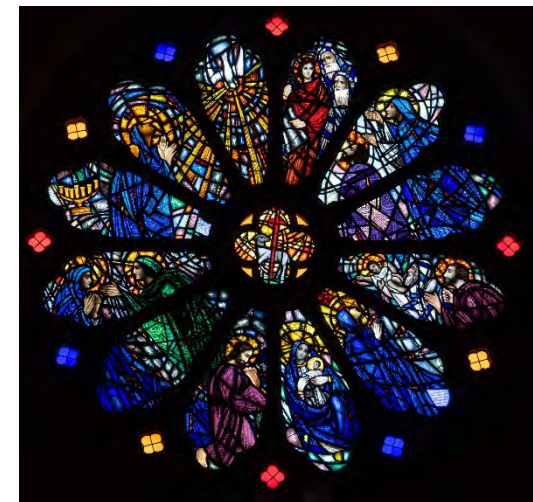


Figure 7: Rose Window, The Joyful Mysteries



## 8 Burrane window.

Artist unknown.

The medieval stone window from Burrane (Killimer) church was removed by Fr John Kenny (1792-1879) and erected into south facing wall of the ground floor of the tower of the church.

Fr John Kenny was the Parish Priest of Kiltrush from 1827 to 1848. Killimer and Kiltrush parishes were united together up until 1846 or 1847.

The stained glass window is thought to be relatively modern glass (late 19th or 20th century).



Figure 8: Burrane Window

## 9 Child of Prague, Scatterry Island, Shamrock and Rose (2018)

by Art Glass, Derry.

This window was blessed by Parish Priest Fr Michael Sheedy (1939-2021) in April 2018. Fr Sheedy was Parish Priest in Kiltrush from 1995 to 2021.

The intertwining rose and shamrock represent the unity of the Irish and English families remembered in this window.

Inscription: 'Donated by Tony and Mary Shannon in Memory of the Shannon, Alder, Downes and Whitelaw families.'

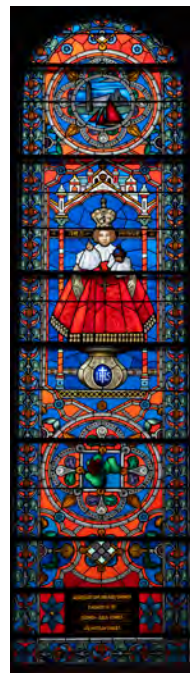


Figure 9: Child of Prague

## 10 St Brigid (1923-1924)

by Harry Clarke (1846-1931) of Joshua Clarke & Sons.

This window was ordered by Very Rev. Dean McInerney (1846-1931) P.P., V.G. on 25th September 1923 for £300. Erected on 9 December 1924.

Eliza Brew (1860/1-1938) donated £100 towards this window.

St Brigid's feast day is 1 February. On her left hand she holds a vessel containing healing oil and on her right hand she has a loaf of bread. Inscriptions: Top: St Brigid healing the sick and feeding the poor. Middle: Pray for Donors.



Bottom: St Brigid and St Mel at St Patrick's Synod (detail left).



Figure 10: St Brigid

## 11 Ascension of Christ (1864-1869) tripartite window by Earley & Powell.

Original colour design for this window is located at NIVAL Dublin. Ref: IE NIVAL EC/137.26-27

Located over the gallery in the south transept.

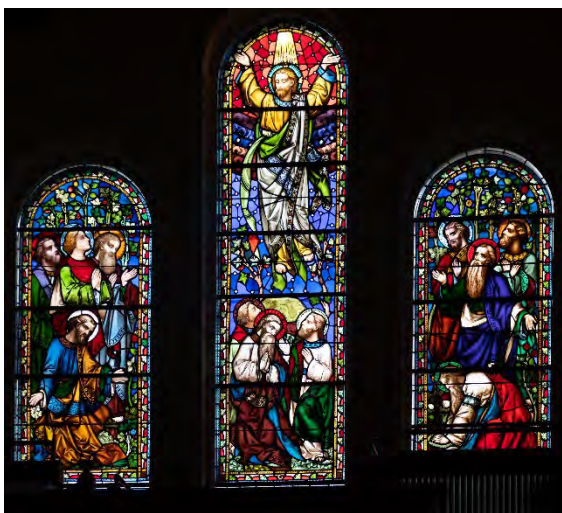


Figure 11: The Ascension

## 12 Abstract.(circa 1868) pair of windows.

Artist is unknown.

This may be the pair of windows that Fr Timothy Kelly (1803-1869) brought from Rome in 1868. (Ref: *Clare Journal*, 12 November 1868.)

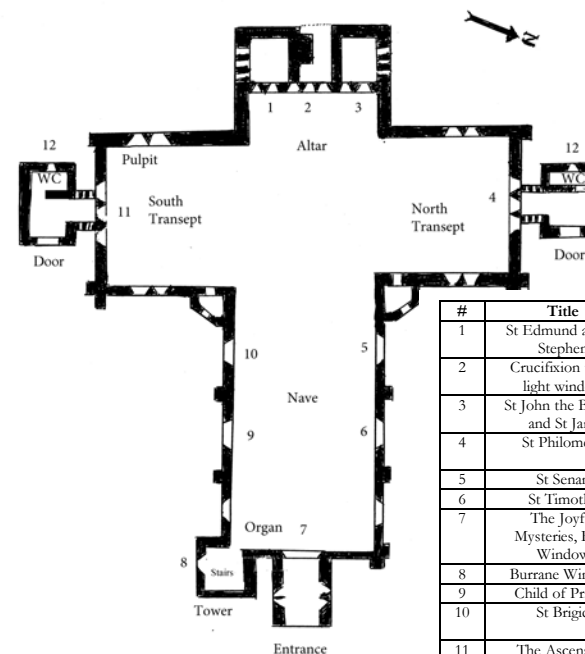
Fr Timothy Kelly was Parish Priest of Kiltrush from 1848 to 1869. In circa 1869 he installed this pair of windows on the second floor of the tower of the church facing south.

These two windows were removed from the tower and relocated to the newly built porches circa 1989 by Canon Peter Ryan (1920-2000) and local architect John Saunders. Father Ryan was Parish Priest in Kiltrush from 1981 until his retirement in 1994.



Figure 12: Abstract, one in each porch

## Plan



#	Title	Artist
1	St Edmund and St Stephen	Harry Clarke Studios
2	Crucifixion three light window	Harry Clarke Studios
3	St John the Baptist and St Jane	Harry Clarke Studios
4	St Philomena	William Earley
5	St Senan	F.S. Barff
6	St Timothy	F.S. Barff
7	The Joyful Mysteries, Rose Window	Willie Earley
8	Burrane Window	Unknown
9	Child of Prague	Art Glass
10	St Brigid	Harry Clarke Studios
11	The Ascension	Earley & Powell
12	Abstract	Unknown